

CAOA DNA Project Update

Project Surnames: Castor - Caster - Coster - Custard - Custer - Gerster - Kaster - Keister - Kester Kiester - Kistard - Kister - Kistard - Koester - Koster - Kuester - Kustard - Kusterd - Kuster . . . and more

Marker	PK.0	Unkn	RC.0
Haplogroup	I1c	R1b	R1b
DYS19a	14	14	--
DYS19b	--	--	--
DYS385a	14	12	11
DYS385b	18	14	11
DYS388	12	12	12
DYS389i	13	12	13
DYS389ii	30	28	29
DYS390	23	23	23
DYS391	10	11	11
DYS392	13	13	13
DYS393	14	13	13
DYS426	11	12	12
DYS437	14	15	15
DYS438	10	12	12
DYS439	11	12	12
DYS441	13	13	--
DYS442	12	10	12
DYS444	13	12	--
DYS445	10	12	--
DYS446	11	13	--
DYS447	25	25	25
DYS448	21	20	20
DYS449	31	29	29
DYS452	10	11	--
DYS454	11	11	11
DYS455	11	11	11
DYS456	14	16	--
DYS458	19	17	17
DYS459a	8	9	9
DYS459b	9	10	9
DYS460	11	11	12
DYS461	12	12	--
DYS462	12	11	--
DYS463	21	21	21
DYS635	22	23	--
GGAAT1B07	10	10	--
YCAIIa	20	19	19
YCAIIb	21	23	23
Y-GAYA-A10	13	13	--
Y-GAYA-H4	11	11	12
3 DNA Families			

We now have 16 results back with lines that do not have a paper trail to connect several of them. It is quite clear and surprising that 14 of those tested are from the (PK.0) Paulus Kuster Line. One is from the (RC.0) Robert Cursiter Line. One is from an (Unde) Undetermined line.

The chart on the left shows the three DNA Families that have been defined by the test results. Is your ancestor from one of these lines or a new one?

The Paulus Kuster descendants now include the descendants of:

- PK.0 Paulus Kuster 1644-1708
- WR.0 William Custer 1729-1786
- * Benjamin Castor 1741-1826
- JC.0 John Caster Sr. 1754-1822
- ** William Custard 1766-1844
- WC.0 William Custard 1810-//
- GC.0 George Castor //--

* PK.0.01.01.11—Circumstantial evidence shows Benjamin is a son of Conrad. We do not have the paper work to prove it.

** William Custard was believed to have descended from the LK.0 line.

The chart on page 57 is based on the test results we have received so far for the Paulus Kuster 1644-1708 known descendants. It illustrates how the mutations can help us to know which lines someone is from.

The chart below the Descendant Chart show the Normal Markers for the PK.0 descendants and the mutations found in each descendants line.

We can visibly see how the different lines can be determined with the DNA results. We can also see questions popping up. For instance:

- Why is Paul son of Johannes 1670 showing a mutation of 17 at DYS385a like both of Hermanus' sons? Does this mean he might be the son of Hermanus?
- Is William Custard from the Paulus line as his DNA indicates and not from the Ludwig Kister 1688-// line?

The answer to these questions is: It is still to early to tell. We need more tests from all of these lines for better definition.

Are you intrigued by the results we have received?

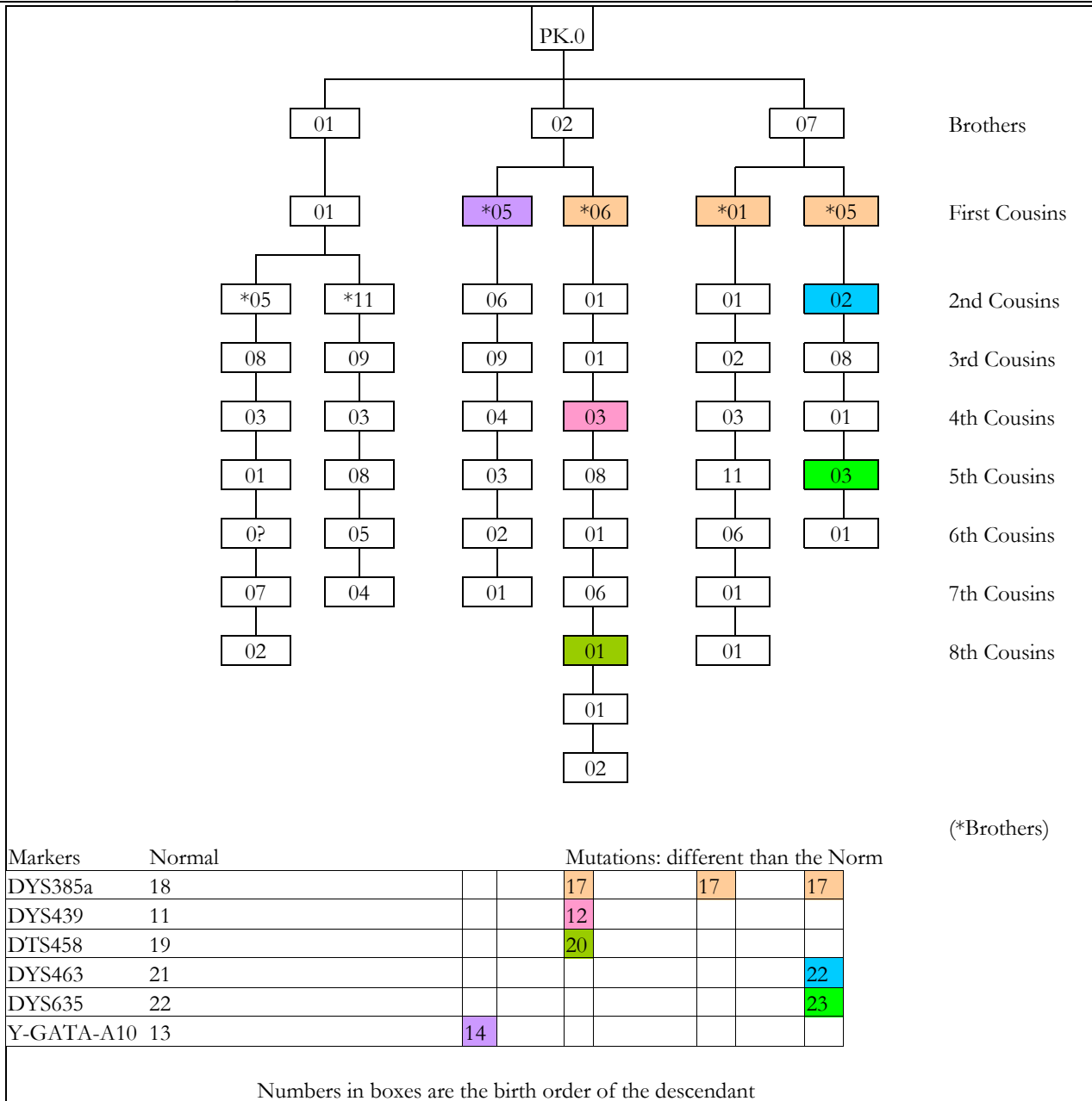
I know I am and I can hardly wait for more tests to come in so we can compare the results. Among our membership we have 35 different lines represented out of the 170+ we are following. It would be so wonderful to tie all of the little lines together in DNA Families even if we don't YET have the paperwork to prove it.

Will a test from the HG.0 Heini Gerster 1688-// line give us a new DNA Family or the HI.0 Heinrich Kister 1700-// line? How is the JGC.0 John George Castor 1710-1797 line related or the JJK.0 Jacob Kastor 1857-// line? Would we be surprised to find out the WL.0 William Castor 1814-1893 is also a descendant of Paulus?

I wish I had more time to spend talking with everyone about the tests. It

Haplogroup I1c — 14 Participants
 (0 Mutations) Haplotype 1 has 6 participant
 (1 Mutation) Haplotype 1 has 4 participant
 (2 Mutations) Haplotype 1 has 2 participant
 (3 Mutations) Haplotype 1 has 2 participant

Haplogroup R1b — 2 Participants
 Haplotype 3 has 1 participant
 Haplotype 4 has 1 participant



Numbers in boxes are the birth order of the descendant

The placement of the mutations is a wild guess. Without more tests of descendants from these lines we cannot pinpoint yet where the mutations occurred.

seems I can never get caught up with the new member lineages. If you would like to talk to me please send me an email at caoa-dna@caoa-gen.org, and I will give you a call right away.

You can help by visiting our website and seeing what is going on and letting every male direct descendant of your ancestor know about our project. Encourage them to participate and we can bring our ancestors together as families.

Another way to help with this project is to volunteer to help contact people, help try to find documentation to tie the PK DNA Families together, surf the web, and see what you can find that might help the project.

As you can see from the above chart three lines from Paulus are a 100% match, and the others are with three or less mis-matches (mutations) and are definitely related. *Patricia*

*There is more information on the CAO A Web Site at
http://www.rootsweb.com/~caoa/ click on "Projects" on the Menu Line*